



A.H. Systems, Inc.

9710 Cozycroft Ave.
Chatsworth, CA 91311



Tel: (818) 998-0223



sales@AHSystems.com

Fax: (818) 998-6892



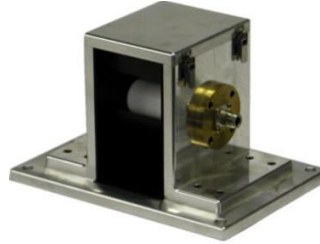
www.AHSystems.com

CPF-530

Current Probe Fixture

10 KHz – 400 MHz

Calibration Fixture for
Current Probes up to 400 MHz.



Frequency Range: 10 KHz – 400 MHz

VSWR: <2:1

Connector: N-Type, female

Physical Dimensions

Opening: 2.9" x 5.4" (75 cm x 136 cm)

Weight: 9 lbs.

Features

- Broad Frequency Range of 10 KHz to 400 MHz
- Excellent VSWR, exceeds DO-160 requirements
- MIL-STD 461 CS114 calibration fixture
- Used with a wide variety of monitoring and injection probes

The A.H. Systems CPF-530 Current Probe Calibration Fixtures is a great way to keep your broadband Current Probes, and Injection Current Probes calibrated and up to date. Their rugged design ensures long life and faultless operation over the wide calibration frequency range of 10 kHz to 400 MHz.

Recommended Accessories

- ICP-521 (Injection Current Probe)
- ICP-522 (Injection Current Probe)
- SAC-211 (3 meter N/N Cable, RG-214U)



A.H. Systems, Inc.

9710 Cozycroft Ave.
Chatsworth, CA 91311



Tel: (818) 998-0223
Fax: (818) 998-6892

◆ sales@AHSystems.com
◆ www.AHSystems.com



A.H. Systems Inc.
9710 Cozycroft Ave. Chatsworth, CA 91311
Phone (818) 998-0223 Fax (818) 998-6892
E-mail: sales@A.H.Systems.com
Web site: <http://www.AHSystems.com>

**VSWR
Calibration Fixture
Model: CPF-530**

