

SAS-510-7 Log Periodic Antenna Operation Manual

TABLE OF CONTENTS

INTRODUCTION

Introduction	3
Intended Purposes.....	4
Optional Equipment.....	5

OPERATING INSTRUCTIONS

Assembly Instructions	6
Mounting Instructions.....	6
Operating Instructions.....	8

SPECIFICATIONS

Specifications	9
Typical Data.....	10
Calculations.....	11
Conversion Factors.....	12

MAINTENANCE

Maintenance Procedures	13
Annual Calibration.....	13
Warranty.....	14

INTRODUCTION



The SAS-510-7 Log Periodic Antenna (also known as a log periodic dipole array) is a compact, lightweight antenna that has been designed to ensure maximum gain, low VSWR and high power handling capabilities. This compact design is an ideal solution for EMC testing where the reduced size of the antenna is preferred to minimize chamber wall coupling and increasing the half power beamwidth to a more acceptable angle that will cover the whole device under test. Constructed of lightweight aluminum, the SAS-510-7 Log Periodic Antenna has been manufactured to operate over a very wide bandwidth. Weighing in at just 1.5 pounds this Log Periodic Antenna is one of the lightest antennas commercially available.

The SAS-510-7 Log Periodic Antenna is the standard workhorse of any EMC compliance test house. The SAS-510-7 has an excellent Front to back ratio and cross-polarization properties that is required per CISPR 16-1 that greatly reduces measurement uncertainty. This Linearly polarized antenna is an ideal solution for radiated emissions and normalized site attenuation.

INTENDED PURPOSES

The log periodic antenna is intended for general laboratory use in a wide variety of industrial and scientific applications and has been designed to be used in the process of generating, controlling and measuring high levels of electromagnetic Radio Frequency (RF) energy. It is the responsibility of the user to assure that the device is operated in a location which will control the radiated energy such that it will not cause injury and will not violate regulatory levels of electromagnetic interference.

OPTIONAL EQUIPMENT

The following is a recommend accessory list for the SAS-510-7 Log Periodic Antenna:

CONNECTING ACCESSORIES:

PAM-0207

This preamplifier has a broad frequency range and at least 30 dB of gain. An ideal solution for improving overall system sensitivity for various emissions testing requirements.

SAC-211

Standard 3 meter N(m) to N(m) RF cable made with RG-214/U. Optional ferrite loading and custom lengths can be made to your specifications. Other cable types available upon request.

Adapters

Need an Adapter? We stock those as well.

MOUNTING ACCESSORIES:

AEH-510

Azimuth and elevation head to assist the test engineer in orientating biconical antenna at the device under test.

ATU-510

Each tripod leg is independently adjustable in angle and length to facilitate antenna height setting. The tripod legs have a rubber tip on one end for indoor or hard surface use, and a metal spike on the other end for outdoor soft surface (such as dirt) use.

LPM-510

The optional Log Periodic Tripod mount (LPM-510) mounts the antenna near the CG of the antenna.

OPERATING INSTRUCTIONS

ASSEMBLY INSTRUCTIONS

The SAS-510-7 Log Periodic Antenna is shipped fully assembled. If an optional Log Periodic Tripod mount (LPM-510) was purchased, that will also be pre-assembled and mounted to the antenna.

MOUNTING INSTRUCTIONS

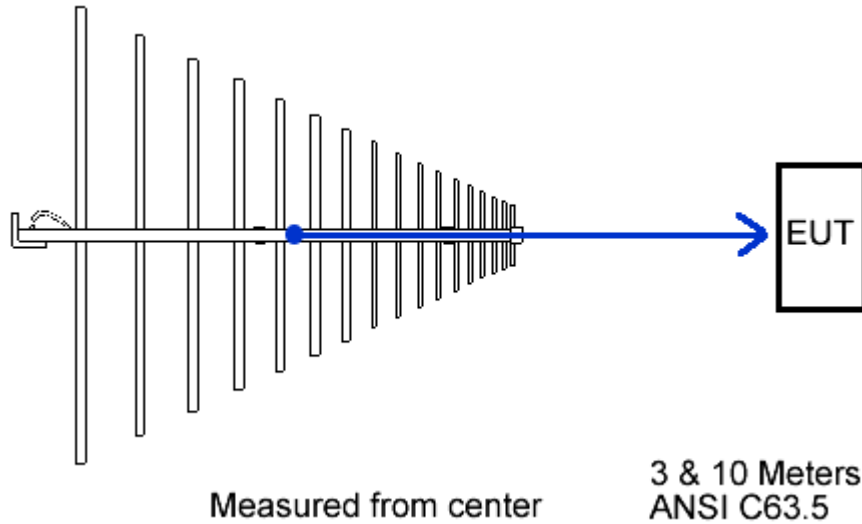
The SAS-510-7 is a lightweight, rear mount Log Periodic Antenna. Attach the antenna to the azimuth and elevation head (AEH-510) through the screw hole in the antenna base. The azimuth and elevation head (AEH-510) mounts to the tripod (ATU-510) top and allows the antennas to be rotated 360 degrees and tilted between horizontal and vertical polarization. Each tripod leg is independently adjustable in angle and length to facilitate antenna height setting. The tripod legs have a rubber tip on one end for indoor or hard surface use, and a metal spike on the other end for outdoor soft surface (such as dirt) use.

Four extra holes are pre-drilled into the booms (at the approximate CG point) of the antenna for an optional Log Periodic Mount (LPM-510). This allows an optional center mount of the antenna where applications require it.

Mount the antenna such that the elements are parallel to the ground for horizontal polarization testing, or perpendicular to the ground for vertical testing. The horizontal beamwidth of the log periodic is approximately 45 degrees and it should be pointed or aimed in the direction that the received signal is coming from.

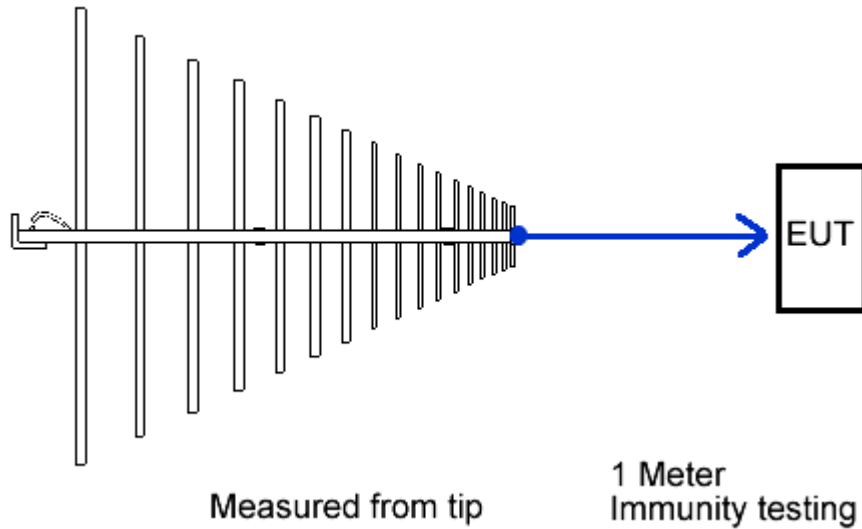
EMISSIONS TESTING MEASUREMENT POINT:

For 3 and 10 meter testing, the measurement is made from the center of the antenna radiating elements and is annotated by a measurement point sticker (per ANSI C63.5).



IMMUNITY TESTING MEASUREMENT POINT:

Measurement is made from the tip of the antenna and typically preformed at a 1 meter distance. (3 meters per IEC 61000-4-3)



OPERATING INSTRUCTIONS

Once the antenna is mounted to a mast or tripod, connect an N-type coaxial cable from the antenna to a receiver or RF generator. The cable should be matched to 50 ohms, relatively low loss and adequately shielded against leakage such as RG-214/U or better. For certain applications where an increased dynamic range is required, an optional preamplifier (PAM-0202) may be used to increase the total system sensitivity.

The Log Periodic Antenna is in the horizontal polarization when the antenna elements are parallel to the ground, and vertical polarization when the elements are perpendicular to the ground.

To minimize impedance mismatch errors, it is recommended that high-quality in-line attenuators be used to reduce reflections. Connect the attenuator at the antenna end of the transmitting cable, or when receiving connect the attenuator at the measuring instrument or preamplifier input.

Dress the cables straight back from the antenna connector at least 1 meter before being dressed vertically down to the ground plane. Signal cables that are dressed orthogonal to the antenna elements will have minimal coupling to the antenna field, but the cable shields may carry external currents caused by impedance imperfections. Also, portions of the cables that are not straight down or straight back will couple to the antenna fields.

SPECIFICATIONS

ELECTRICAL SPECIFICATIONS

Frequency Range	290 Mhz – 7 GHz
Antenna Factor.....	15 to 47 dB/m
Antenna Gain.....	5.8 dBi
Maximum Continuous Power.....	1000 Watts
Average Beamwidth.....	35°
Average Beamwidth (H-Field).....	100°
Impedance (nominal).....	50Ω
Average VSWR.....	1.65:1 typ. 2.5:1 max
Maximum Radiated Field.....	200 V/m
Connector.....	N-Type (female)
Mounting.....	1/4-20 (female)

PHYSICAL SPECIFICATIONS

Weight	1.4 lbs. (0.64 kg)
Size (L x W x H).....	24.0" x 20.1" x 2.5" (61.2 cm x 51cm x 6.3cm)

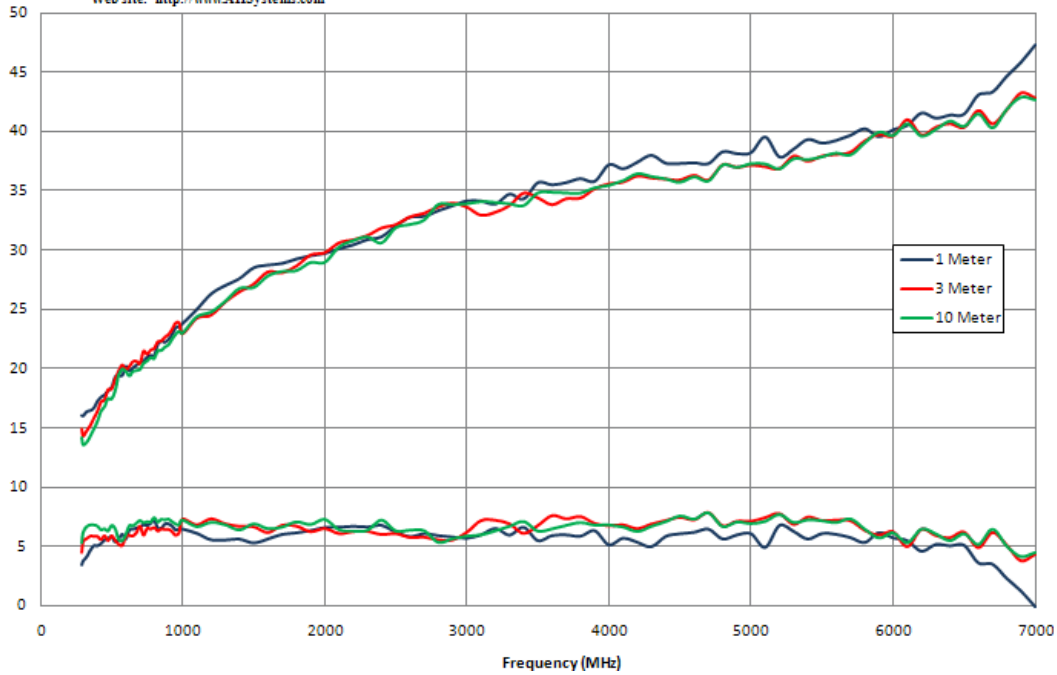
TYPICAL DATA



A.H. Systems Inc.
 9710 Cozycroft Ave. Chatsworth, CA 91311
 Phone (818) 998-0223 Fax (818) 998-6892
 E-mail: sales@AHSystems.com
 Web site: <http://www.AHSystems.com>

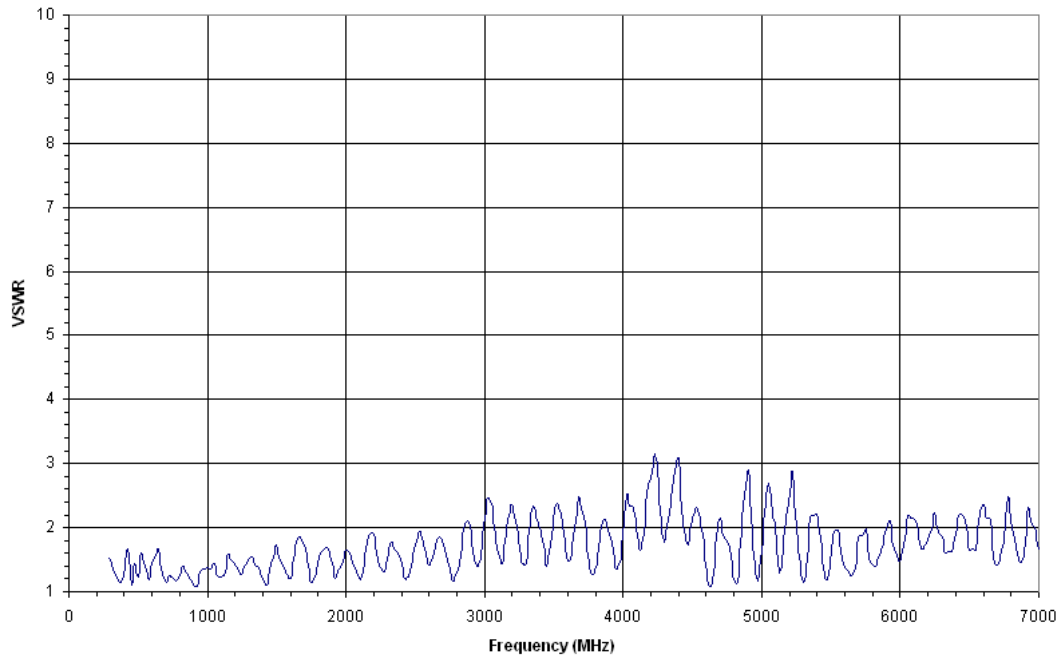
Antenna Data
 Log Periodic Antenna
 Model: SAS-510-7

Conversion of meter reading
 to field strength:
 $\text{dBuV/m} = \text{dBuV} + \text{AF} + \text{cable loss}$



A.H. Systems Inc.
 9710 Cozycroft Ave. Chatsworth, CA 91311
 Phone (818) 998-0223 Fax (818) 998-6892
 E-mail: sales@AHSystems.com
 Web site: <http://www.AHSystems.com>

VSWR
 Log Periodic Antenna
 Model: SAS-510-7



CALCULATIONS

EMISSIONS TESTING

Individual calibration data for the log periodic antenna is supplied at appropriate distances (3, and 10 meter) to comply with various emissions test requirements. For emissions measurements, add antenna factor plus cable loss to receiver reading in dB μ V to convert to field strength in dB μ V/meter.

$$\text{Field Strength(dBuV/m)} = \text{SA(dBuV)} + \text{AF(dB/m)} + \text{cable loss (dB)}$$

SA = Spectrum Analyzer or Receiver voltage reading

AF = Antenna Correction Factor

CL = Cable Loss in dB

IMMUNITY TESTING

For Immunity measurements, the generated electric field strength can be calculated by:

FS = Approximate Field Strength in (V/m)

$$\text{FS (V/m)} = \frac{\sqrt{30Pg}}{d}$$

P = Power in watts

g = Numeric Gain

d = Distance in meters

TYPICAL CONVERSION FORMULAS

LOG -> LINEAR VOLTAGE

dB μ V to Volts	$V = 10^{((dB_{\mu V} - 120) / 20)}$
Volts to dB μ V	$dB_{\mu V} = 20 \log(V) + 120$
dBV to Volts	$V = 10^{(dBV / 20)}$
Volts to dBV	$dBV = 20 \log(V)$
dBV to dB μ V	$dB_{\mu V} = dBV + 120$
dB μ V to dBV	$dBV = dB_{\mu V} - 120$

LOG -> LINEAR CURRENT

dB μ A to μ A	$\mu A = 10^{(dB_{\mu A} / 20)}$
μ A to dB μ A	$dB_{\mu A} = 20 \log(\mu A)$
dB A to A	$A = 10^{(dB A / 20)}$
A to dB A	$dB A = 20 \log(A)$
dB A to dB μ A	$dB_{\mu A} = dB A + 120$
dB μ A to dB A	$dB A = dB_{\mu A} - 120$

LOG -> LINEAR POWER

dBm to Watts	$W = 10^{((dBm - 30) / 10)}$
Watts to dBm	$dBm = 10 \log(W) + 30$
dBW to Watts	$W = 10^{(dBW / 10)}$
Watts to dBW	$dBW = 10 \log(W)$
dBW to dBm	$dBm = dBW + 30$
dBm to dBW	$dBW = dBm - 30$

TERM CONVERSIONS

dBm to dB μ V	$dB_{\mu V} = dBm + 107 \quad (50\Omega)$ $dB_{\mu V} = dBm + 10 \log(Z) + 90$
dB μ V to dBm	$dBm = dB_{\mu V} - 107 \quad (50\Omega)$ $dBm = dB_{\mu V} - 10 \log(Z) - 90$
dBm to dB μ A	$dB_{\mu A} = dBm - 73 \quad (50\Omega)$ $dB_{\mu A} = dBm - 10 \log(Z) + 90$
dB μ A to dBm	$dBm = dB_{\mu A} + 73 \quad (50\Omega)$ $dBm = dB_{\mu A} + 10 \log(Z) - 90$
dB μ A to dB μ V	$dB_{\mu V} = dB_{\mu A} + 34 \quad (50\Omega)$ $dB_{\mu V} = dB_{\mu A} + 20 \log(Z)$
dB μ V to dB μ A	$dB_{\mu A} = dB_{\mu V} - 34 \quad (50\Omega)$ $dB_{\mu A} = dB_{\mu V} - 20 \log(Z)$

FIELD STRENGTH & POWER DENSITY

dB μ V/m to V/m	$V/m = 10^{(((dB_{\mu V/m}) - 120) / 20)}$
V/m to dB μ V/m	$dB_{\mu V/m} = 20 \log(V/m) + 120$
dB μ V/m to dBmW/m ²	$dBmW/m^2 = dB_{\mu V/m} - 115.8$
dBmW/m ² to dB μ V/m	$dB_{\mu V/m} = dBmW/m^2 + 115.8$
dB μ V/m to dB μ A/m	$dB_{\mu A/m} = dB_{\mu V/m} - 51.5$
dB μ A/m to dB μ V/m	$dB_{\mu V/m} = dB_{\mu A} + 51.5$
dB μ A/m to dBpT	$dBpT = dB_{\mu A/m} + 2$
dBpT to dB μ A/m	$dB_{\mu A/m} = dBpT - 2$
W/m ² to V/m	$V/m = \text{SQRT}(W/m^2 * 377)$
V/m to W/m ²	$W/m^2 = (V/m)^2 / 377$
μ T to A/m	$A/m = \mu T / 1.25$
A/m to μ T	$\mu T = 1.25 * A/m$

E-FIELD ANTENNAS

Correction Factor	$dB_{\mu V/m} = dB_{\mu V} + AF$
Field Strength	$V/m = \sqrt{\frac{30 * \text{watts} * \text{Gain}_{\text{numeric}}}{\text{meters}}}$
Required Power	$\text{Watts} = \frac{(V/m * \text{meters})^2}{30 * \text{Gain}_{\text{numeric}}}$

LOOP ANTENNAS

Correction Factors	$dB_{\mu A/m} = dB_{\mu V} + AF$
Assumed E-field for shielded loops	$dB_{\mu V/m} = dB_{\mu A/m} + 51.5$ $dBpT = dB_{\mu V} + dBpT/\mu V$

CURRENT PROBES

Correction Factor	$dB_{\mu A} = dB_{\mu V} - dB_{(ohm)}$
Power needed for injection probe given voltage(V) into 50 Ω load and Probe Insertion Loss (I _L)	$\text{Watts} = 10^{((I_L + 10 \log(V^2/50)) / 10)}$

MAINTENANCE

MAINTENANCE PROCEDURES

Proper antenna maintenance should include:

- Visual inspection of RF connectors
- Check for bent and loose elements
- Check for loose or missing hardware
- Corrosion near the element joints

At least once a month it is a good idea to wipe down the antenna with a damp rag.

ANNUAL CALIBRATION

To ensure reliable and repeatable long-term performance, annual re-calibration of your antennas, preamplifiers and current probes by A.H. Systems experienced technicians is recommended. Our staff can calibrate almost any type or brand of antenna.

It is always up to the user to determine the appropriate interval for calibration certification based on the requirements of the end users specific test/application. The calibration of EMC antennas is important for those conforming to compatibility standard. Radiated emissions testing for electromagnetic compatibility (EMC) requires the measurement of electric field (E-field) strength, which is compared with a limit level. The output voltage of an antenna is converted to E-field strength via its antenna factor, the measurement of which must include the uncertainty components related to that particular antenna, taking into consideration the environment in which the antenna is to be used for the testing. Most standards will specify the appropriate interval for re-calibration of your EMC antenna.

In some cases these antennas are used for a manufacturers pre-compliance testing, field monitoring, surveillance and/or other applications where the exact field intensity of the received signal is not of importance. For those customers a yearly re-calibration is not necessary, however it is recommended that an interval for maintenance be performed.

For more information about our calibration services or to place an order for antenna calibration visit our website at <http://www.AHSystems.com> or call 1(818) 998-0223.

WARRANTY INFORMATION

A.H. Systems Inc., warrants that our Antennas, Sensors and Probes will be free from defects in materials and workmanship for a period of three (3) years. All other products delivered under contract will be warranted for a period of two (2) years. Damage caused by excessive signals at the product's input is not covered under the warranty. A.H. Systems' obligation under this warranty shall be limited to repairing or replacing, F.O.B. Chatsworth, California, each part of the product which is defective, provided that the buyer gives A.H. Systems notice of such defect within the warranty period commencing with the delivery of the product by A.H. Systems.

The remedy set forth herein shall be the only remedy available to the buyer, and in no event shall A.H. Systems be liable for direct, indirect, incidental or consequential damages.

This warranty shall not apply to any part of the product which, without fault of A.H. Systems has been subject to alteration, failure caused by a part not supplied by A.H. Systems, accident, fire or other casualty, negligence, misuse or normal wear of materials.

Except for the warranty set forth above, there are no other warranties, expressed or implied, with respect to the condition of the product or its suitability for the use intended for them by the buyer.

For prompt service, please contact our service department for a Return Material Authorization Number before shipping equipment back to us.